

Environment Protection Licence

Licence - 767

Licence Details

Number:	767
Anniversary Date:	01-January

Licensee

METROPOLITAN COLLIERIES PTY. LTD.

PO BOX 402

HELENSBURGH NSW 2508

Premises

METROPOLITAN COLLIERY

PARKES STREET

HELENSBURGH NSW 2508

Scheduled Activity

Coal works

Mining for coal

Fee Based Activity

Scale

Coal works	> 2000000-5000000 T annual handling capacity
Mining for coal	> 2000000-3500000 T annual production capacity

Contact Us

NSW EPA

6 Parramatta Square

10 Darcy Street

PARRAMATTA NSW 2150

Phone: 131 555

Email: info@epa.nsw.gov.au

Locked Bag 5022

PARRAMATTA NSW 2124



Environment Protection Licence

Licence - 767

INFORMATION ABOUT THIS LICENCE	4
Dictionary	4
Responsibilities of licensee	4
Variation of licence conditions	4
Duration of licence	4
Licence review	4
Fees and annual return to be sent to the EPA	4
Transfer of licence	5
Public register and access to monitoring data	5
1 ADMINISTRATIVE CONDITIONS	6
A1 What the licence authorises and regulates	6
A2 Premises or plant to which this licence applies	6
A3 Information supplied to the EPA	8
2 DISCHARGES TO AIR AND WATER AND APPLICATIONS TO LAND	8
P1 Location of monitoring/discharge points and areas	8
3 LIMIT CONDITIONS	10
L1 Pollution of waters	10
L2 Concentration limits	11
4 OPERATING CONDITIONS	11
O1 Activities must be carried out in a competent manner	11
O2 Maintenance of plant and equipment	12
O3 Dust	12
O4 Emergency response	12
O5 Other operating conditions	12
5 MONITORING AND RECORDING CONDITIONS	13
M1 Monitoring records	13
M2 Requirement to monitor concentration of pollutants discharged	13
M3 Testing methods - concentration limits	15
M4 Environmental monitoring	15
M5 Weather monitoring	16
M6 Recording of pollution complaints	16
M7 Telephone complaints line	17
M8 Requirement to monitor volume or mass	17
M9 Other monitoring and recording conditions	17
6 REPORTING CONDITIONS	18



Environment Protection Licence

Licence - 767

R1	Annual return documents	18
R2	Notification of environmental harm	19
R3	Written report	19
7	GENERAL CONDITIONS	20
G1	Copy of licence kept at the premises or plant	20
G2	Other general conditions	20
8	POLLUTION STUDIES AND REDUCTION PROGRAMS	22
U1	PRP17: Options Assessment - Prevent or Minimise Turkey's Nest Dam Discharges	22
U2	PRP18: Options Assessment - Storm water Treatment to Remove Coal Fines	23
U3	PRP21: Discharges from LDP7 - Improved Water Management System Report	24
U4	PRP22: Water Seepage/Groundwater Options Assessment	27
9	SPECIAL CONDITIONS	28
E1	Update Surface Water Management Plan	28
E2	Completed Special Conditions	28
	DICTIONARY	29
	General Dictionary	29

Environment Protection Licence

Licence - 767

Information about this licence

Dictionary

A definition of terms used in the licence can be found in the dictionary at the end of this licence.

Responsibilities of licensee

Separate to the requirements of this licence, general obligations of licensees are set out in the Protection of the Environment Operations Act 1997 ("the Act") and the Regulations made under the Act. These include obligations to:

- ensure persons associated with you comply with this licence, as set out in section 64 of the Act;
- control the pollution of waters and the pollution of air (see for example sections 120 - 132 of the Act);
- report incidents causing or threatening material environmental harm to the environment, as set out in Part 5.7 of the Act.

Variation of licence conditions

The licence holder can apply to vary the conditions of this licence. An application form for this purpose is available from the EPA.

The EPA may also vary the conditions of the licence at any time by written notice without an application being made.

Where a licence has been granted in relation to development which was assessed under the Environmental Planning and Assessment Act 1979 in accordance with the procedures applying to integrated development, the EPA may not impose conditions which are inconsistent with the development consent conditions until the licence is first reviewed under Part 3.6 of the Act.

Duration of licence

This licence will remain in force until the licence is surrendered by the licence holder or until it is suspended or revoked by the EPA or the Minister. A licence may only be surrendered with the written approval of the EPA.

Licence review

The Act requires that the EPA review your licence at least every 5 years after the issue of the licence, as set out in Part 3.6 and Schedule 5 of the Act. You will receive advance notice of the licence review.

Fees and annual return to be sent to the EPA

For each licence fee period you must pay:

- an administrative fee; and
- a load-based fee (if applicable).



Environment Protection Licence

Licence - 767

The EPA publication “A Guide to Licensing” contains information about how to calculate your licence fees. The licence requires that an Annual Return, comprising a Statement of Compliance and a summary of any monitoring required by the licence (including the recording of complaints), be submitted to the EPA. The Annual Return must be submitted within 60 days after the end of each reporting period. See condition R1 regarding the Annual Return reporting requirements.

Usually the licence fee period is the same as the reporting period.

Transfer of licence

The licence holder can apply to transfer the licence to another person. An application form for this purpose is available from the EPA.

Public register and access to monitoring data

Part 9.5 of the Act requires the EPA to keep a public register of details and decisions of the EPA in relation to, for example:

- licence applications;
- licence conditions and variations;
- statements of compliance;
- load based licensing information; and
- load reduction agreements.

Under s320 of the Act application can be made to the EPA for access to monitoring data which has been submitted to the EPA by licensees.

This licence is issued to:

METROPOLITAN COLLIERIES PTY. LTD.
PO BOX 402
HELENSBURGH NSW 2508

subject to the conditions which follow.

Environment Protection Licence

Licence - 767

1 Administrative Conditions

A1 What the licence authorises and regulates

A1.1 This licence authorises the carrying out of the scheduled activities listed below at the premises specified in A2. The activities are listed according to their scheduled activity classification, fee-based activity classification and the scale of the operation.

Unless otherwise further restricted by a condition of this licence, the scale at which the activity is carried out must not exceed the maximum scale specified in this condition.

Scheduled Activity	Fee Based Activity	Scale
Coal works	Coal works	> 2000000 - 5000000 T annual handing capacity
Mining for coal	Mining for coal	> 2000000 - 3500000 T annual production capacity

A2 Premises or plant to which this licence applies

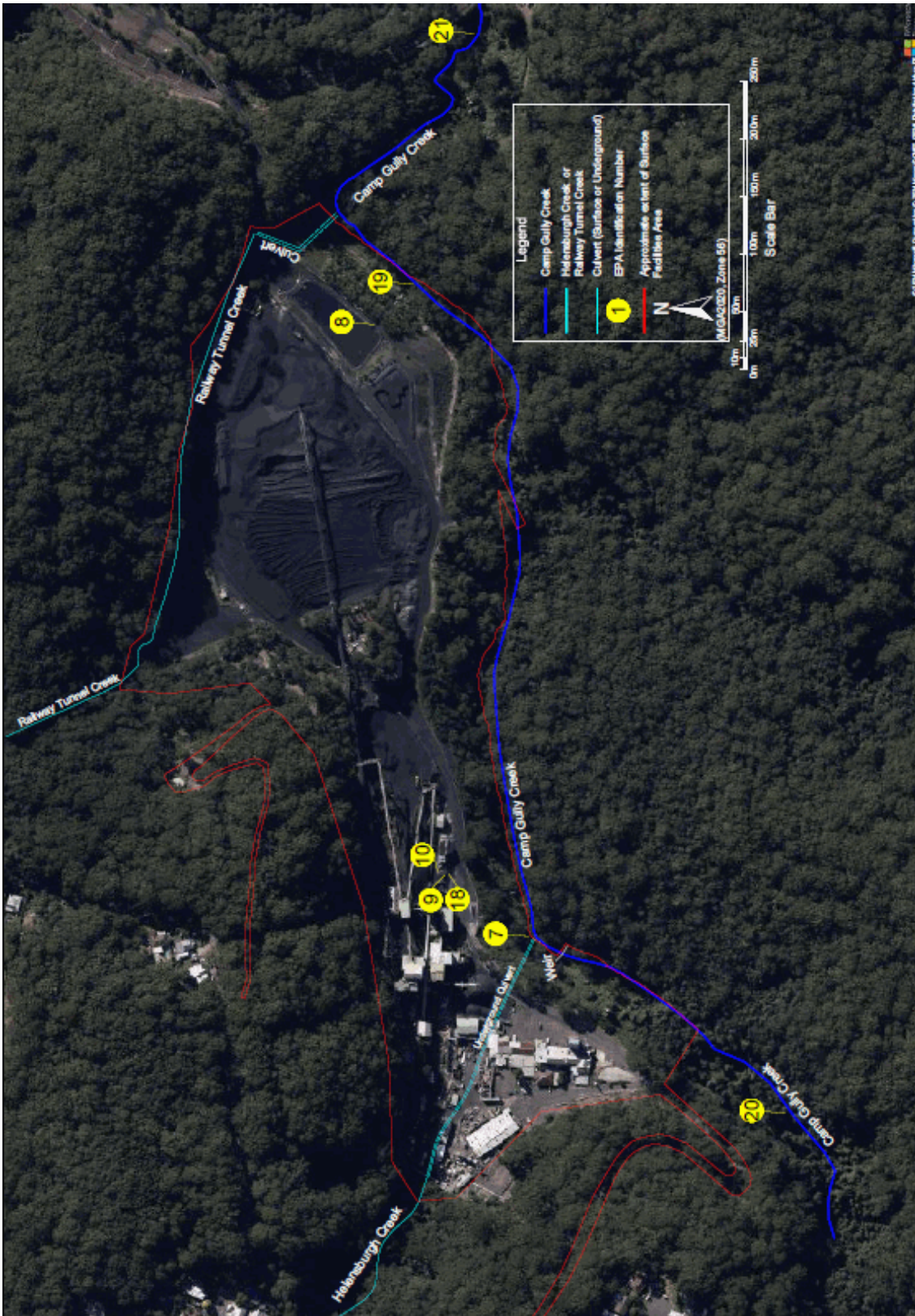
A2.1 The licence applies to the following premises:

Premises Details
METROPOLITAN COLLIERY
PARKES STREET
HELENSBURGH
NSW 2508
LOT 2 DP 240006, LOT 342 DP 752033, LOT 617 DP 752033, LOT 1 DP 815356, LOT 1 DP 1111555, LOT 7304 DP 1142152, LOT 21 DP 1192548, LOT 2 DP 1212680
THE "PREMISES MAP" IS THE DOCUMENT TITLED "PREMISES MAP - METROPOLITAN COLLIERIES PTY LTD - PARKES ST HELENSBURGH NSW - EPL 767" HELD ON EPA FILE DOC24/997839.

A2.2 The premises location is shown on the map below.

Environment Protection Licence

Licence - 767



A2.3 Premises Description

Description	Operation
Lot 1 DP1111555	Coal Stockpile Area

Environment Protection Licence

Licence - 767

Lot 1 DP815356	Coal Stockpile Area
Lot 2 DP1212680	Coal Stockpile Area
Lot 21 DP1192548	Coal Stockpile Area
Lot 342 DP 752033	Coal Stockpile Area
Lot 617 DP 752033	Coal Stockpile Area
Lot 7304 DP1142152	Pit Top
Lot 2 DP 240006	No. 3 Vent Shaft

A2.4 In addition to the land set out in the premises details table above, this licence also applies to the following land as contained in the following leases, licences and authorisations for which all necessary consents or approvals for mining for coal have been obtained (including any consent or approval required under the Environmental Planning and Assessment Act 1979).

Consolidated Coal Lease 703;
Mining Lease 1610;
Mining Lease 1702;
Mining Purpose Lease 320;
Coal Lease 379.

A3 Information supplied to the EPA

A3.1 Works and activities must be carried out in accordance with the proposal contained in the licence application, except as expressly provided by a condition of this licence.

In this condition the reference to "the licence application" includes a reference to:

- the applications for any licences (including former pollution control approvals) which this licence replaces under the Protection of the Environment Operations (Savings and Transitional) Regulation 1998; and
- the licence information form provided by the licensee to the EPA to assist the EPA in connection with the issuing of this licence.

2 Discharges to Air and Water and Applications to Land

P1 Location of monitoring/discharge points and areas

P1.1 The following points referred to in the table below are identified in this licence for the purposes of monitoring and/or the setting of limits for the emission of pollutants to the air from the point.

<i>Air</i>			
EPA identification no.	Type of Monitoring Point	Type of Discharge Point	Location Description
1	Dust Monitoring		Dust gauge located at 136 The Crescent labelled "1" on the "Discharge & Monitoring Points" Map.

Environment Protection Licence

Licence - 767

2	Dust Monitoring	Dust gauge located at 28 Old Station Rd labelled as "2" on the "Discharge & Monitoring Points" Map.
3	Dust Monitoring	Dust gauge located at the Mine entrance labelled as "3" on the "Discharge & Monitoring Points" Map.
4	Dust Monitoring	Dust gauge located at Helensburgh Golf Club labelled as "4" on the "Discharge & Monitoring Points" Map.
5	Dust Monitoring	Dust gauge located at 83 Parkes Street labelled as "5" on the "Discharge & Monitoring Points" Map.
11	Dust Monitoring	Dust gauge located at 59 Parkes Street labelled as "11" on the "Discharge & Monitoring Points" Map.
12	Dust Monitoring	Dust gauge located at 32 Old Station Road labelled as "12" on the "Discharge & Monitoring Points" Map.
13	Dust Monitoring	Dust gauge located at 88 Parkes Street labelled as "13" on the "Discharge & Monitoring Points" Map.
14	Dust Monitoring	Dust gauge located at Helensburgh Public School labelled as "14" on the "Discharge & Monitoring Points" Map.
15	Dust Monitoring	Dust gauge located at Helensburgh Private School labelled as "15" on the "Discharge & Monitoring Points" Map.
16	Ambient Air Monitoring	PM10 monitor located at 12 Robertson Street labelled as "16" on the "Discharge & Monitoring Points" Map.

P1.2 All Points are marked on the map titled "Discharge & Monitoring Points, Drawing Number 2, May 2023" held on EPA file DOC23/357066-1.

P1.3 The following utilisation areas referred to in the table below are identified in this licence for the purposes of the monitoring and/or the setting of limits for any application of solids or liquids to the utilisation area.

P1.4 The following points referred to in the table are identified in this licence for the purposes of the monitoring and/or the setting of limits for discharges of pollutants to water from the point.

Water and land

EPA Identification no.	Type of Monitoring Point	Type of Discharge Point	Location Description
7		Discharge to Waters	The outlet of the concrete flume from the Water Treatment Plant to Camp Gully Creek and labelled "7" on the Premises Map. Lat. long -34.188148, 150.993095.

Environment Protection Licence

Licence - 767

8	Discharge to Waters Volume Monitoring	Discharge to Waters Volume Monitoring	The overflow weir on the spillway at the Turkey's Nest Dam flowing to Camp Creek and labelled "8" on the Premises Map. Lat. long -34.187060, 150.998842
9	Discharge Water Quality Monitoring		The sampling tap at the clean water tank of the Water Treatment Plant and labelled "9" on the Premises Map. Lat. long. -34.187527, 150.993675
10	Volume Monitoring		The flowmeter on the pipeline discharging from the clean water tank in the Water Treatment Plant and labelled "10" on the Premises Map. Lat. long -34.187476, 150.993682
18	Discharge Water Quality Monitoring		Monitor located in Water Treatment Plant, Point 7). Lat. Long. -34.188189, 150.993081
19	Discharge Water Quality Monitoring		Monitor located in Camp Gully Creek near Point 8 spillway discharge drain outlet. Lat. Long. -34.187371, 150.999236
20	Ambient Water Quality Monitoring		Monitor located in Camp Gully Creek upstream of Metropolitan Colliery. Lat. Long. -34.188780, 150.992719
21	Ambient Water Quality Monitoring		Monitor located in Camp Gully Creek downstream of Metropolitan Colliery. Lat. Long. -34.187897, 151.001583

Note: The "Premises Map" is the document titled "Premises Map - Metropolitan Collieries Pty Ltd - Parkes St Helensburgh NSW - EPL 767" held on EPA file DOC24/997839.

P1.5 The following points referred to in the table below are identified in this licence for the purposes of weather and/or noise monitoring and/or setting limits for the emission of noise from the premises.

Noise/Weather

EPA identification no.	Type of monitoring point	Location description
17	Meteorological Station	Weather station at 12 Robertson Street Helensburgh labelled as "17" on the "Discharge & Monitoring Points" Map.

3 Limit Conditions

L1 Pollution of waters

Environment Protection Licence

Licence - 767

- L1.1 Except as may be expressly provided in any other condition of this licence, the licensee must comply with section 120 of the Protection of the Environment Operations Act 1997.

L2 Concentration limits

- L2.1 For each monitoring/discharge point or utilisation area specified in the table/s below (by a point number), the concentration of a pollutant discharged at that point, or applied to that area, must not exceed the concentration limits specified for that pollutant in the table.
- L2.2 Where a pH quality limit is specified in the table, the specified percentage of samples must be within the specified ranges.
- L2.3 To avoid any doubt, this condition does not authorise the pollution of waters by any pollutant other than those specified in the table/s.
- L2.4 Water and/or Land Concentration Limits

POINT 7

Pollutant	Units of Measure	50 percentile concentration limit	90 percentile concentration limit	3DGM concentration limit	100 percentile concentration limit
pH					6.5 - 8.5
Total suspended solids	milligrams per gram				30

Note: The monitoring at Point 9 required by condition M2 is to be conducted by the licensee to determine compliance with the limits specified for Points 7 in condition L2.4. A non-compliance is only taken to have occurred if the results of water quality monitoring required by the licence at point 9 are greater than the limits in L2.4 and there is a discharge occurring from Points 7 at the time of sampling.

4 Operating Conditions

O1 Activities must be carried out in a competent manner

- O1.1 Licensed activities must be carried out in a competent manner.
This includes:
- the processing, handling, movement and storage of materials and substances used to carry out the activity; and
 - the treatment, storage, processing, reprocessing, transport and disposal of waste generated by the activity.

Environment Protection Licence

Licence - 767

O2 Maintenance of plant and equipment

- O2.1 All plant and equipment installed at the premises or used in connection with the licensed activity:
- must be maintained in a proper and efficient condition; and
 - must be operated in a proper and efficient manner.

O3 Dust

- O3.1 The premises must be maintained in a condition which minimises or prevents the emission of dust from the premises.

O4 Emergency response

- O4.1 The licensee must maintain and respond to any incidents as necessary using a Coal Discharge Response Plan.

The Plan must:

- Incorporate a monitoring program to immediately detect incidents involving coal discharges and an associated trigger action response.
- Prompt an immediate on ground assessment / identification process.
- Result in the activation of an incident management team at the premises.
- Maintain planning approval/s for access and clean up protocols / methodologies /activities on all relevant downstream properties. For example REFs with National Parks, Crown Lands, NSW Fisheries, Transport for NSW.
- Maintain access to resources dedicated to incident response, coordination, and clean up. This must include on site personnel, specialists (technical and environmental), contractors, and equipment.
- Detail response, coordination, and clean up actions.
- Be incorporated into the Pollution Incident Response and Management Plan.

O5 Other operating conditions

O5.1 Sediment Basin Management

The licensee must:

- maintain sediment accumulated in the Turkeys Nest Dam and Settling Pond below 25% of the total volume of each storage, averaged over 12 months.
- empty the Turkey's Nest Dam of accumulated sediment & water every second year for inspection and maintenance.
- empty the Settling Pond of accumulated sediment & water every second (alternate) year for inspection and maintenance
- maintain wet weather storages at the premises to retain 160 millimetres of rainfall over any consecutive five-day period,
- report the relevant monitoring data, verification information, and a short explanation on each of the above in the Annual Return Supplement.

Note: The EPA will give consideration to extreme rainfall events should there be any non compliance with the above

Environment Protection Licence

Licence - 767

requirements.

Note: These conditions may change as an outcome of one of the Pollution Reduction Programs on this licence or as other relevant information becomes available.

5 Monitoring and Recording Conditions

M1 Monitoring records

M1.1 The results of any monitoring required to be conducted by this licence or a load calculation protocol must be recorded and retained as set out in this condition.

M1.2 All records required to be kept by this licence must be:

- in a legible form, or in a form that can readily be reduced to a legible form;
- kept for at least 4 years after the monitoring or event to which they relate took place; and
- produced in a legible form to any authorised officer of the EPA who asks to see them.

M1.3 The following records must be kept in respect of any samples required to be collected for the purposes of this licence:

- the date(s) on which the sample was taken;
- the time(s) at which the sample was collected;
- the point at which the sample was taken; and
- the name of the person who collected the sample.

M2 Requirement to monitor concentration of pollutants discharged

M2.1 For each monitoring/discharge point or utilisation area specified below (by a point number), the licensee must monitor (by sampling and obtaining results by analysis) the concentration of each pollutant specified in Column 1. The licensee must use the sampling method, units of measure, and sample at the frequency, specified opposite in the other columns:

M2.2 Air Monitoring Requirements

POINT 1,2,3,4,5

Pollutant	Units of measure	Frequency	Sampling Method
Ash	grams per square metre per month	Monthly	Australian Standard 3580.10.1-2003
Combustible solids	grams per square metre per month	Monthly	Australian Standard 3580.10.1-2003
Insoluble solids	grams per square metre per month	Monthly	Australian Standard 3580.10.1-2003

POINT 11,12,13,14,15

Environment Protection Licence

Licence - 767

Pollutant	Units of measure	Frequency	Sampling Method
Ash	grams per square metre per month	Monthly	Australian Standard 3580.10.1-2003
Combustible solids	grams per square metre per month	Monthly	Australian Standard 3580.10.1-2003
Insoluble solids	grams per square metre per month	Monthly	Australian Standard 3580.10.1-2003

POINT 16

Pollutant	Units of measure	Frequency	Sampling Method
PM10	micrograms per cubic metre	Monthly	AS/NZS 3580.9.6:2003

M2.3 Water and/ or Land Monitoring Requirements**POINT 9**

Pollutant	Units of measure	Frequency	Sampling Method
Alkalinity (as calcium carbonate)	milligrams per litre	Monthly during discharge	Grab sample
Aluminium (dissolved)	micrograms per litre	Monthly during discharge	Grab sample
Antimony (dissolved)	micrograms per litre	Monthly during discharge	Grab sample
Arsenic (dissolved)	micrograms per litre	Monthly during discharge	Grab sample
Bicarbonate alkalinity	milligrams per litre	Monthly during discharge	Grab sample
Chromium (dissolved)	micrograms per litre	Monthly during discharge	Grab sample
Electrical conductivity	microsiemens per centimetre	Monthly during discharge	Grab sample
Molybdenum (dissolved)	micrograms per litre	Monthly during discharge	Grab sample
Nickel (dissolved)	micrograms per litre	Monthly during discharge	Grab sample
Nitrogen (total)	micrograms per litre	Monthly during discharge	Grab sample
Nitrogen Oxides	micrograms per litre	Monthly during discharge	Grab sample
pH	pH	Monthly during discharge	Grab sample
Phosphorus (total)	micrograms per litre	Monthly during discharge	Grab sample
Reactive Phosphorus	micrograms per litre	Monthly during discharge	Grab sample

Environment Protection Licence

Licence - 767

Total suspended solids	milligrams per litre	Monthly during discharge	Grab sample
Turbidity	nephelometric turbidity units	Monthly during discharge	Grab sample
Vanadium (dissolved)	micrograms per litre	Monthly during discharge	Grab sample

POINT 18,19,20,21

Pollutant	Units of measure	Frequency	Sampling Method
Electrical conductivity	microsiemens per centimetre	Continuous	In situ
pH	pH	Continuous	In situ
Temperature	Celsius	Continuous	In situ
Turbidity	nephelometric turbidity units	Continuous	In situ

- M2.4 All continuous monitoring equipment must be operated and maintained to achieve an availability of 90% during the reporting period.
- M2.5 The licensee must provide public access on its website to the real time monitoring data collected under the licence for points 8, 10, 18, 19, 20 and 21.
- M2.6 The licensee must provide a monthly summary of the real time monitoring data to the Metropolitan Coal Community Consultative Committee, and must publish the monthly summary on its website.

M3 Testing methods - concentration limits

- M3.1 Monitoring for the concentration of a pollutant emitted to the air required to be conducted by this licence must be done in accordance with:
- any methodology which is required by or under the Act to be used for the testing of the concentration of the pollutant; or
 - if no such requirement is imposed by or under the Act, any methodology which a condition of this licence requires to be used for that testing; or
 - if no such requirement is imposed by or under the Act or by a condition of this licence, any methodology approved in writing by the EPA for the purposes of that testing prior to the testing taking place.

Note: The *Protection of the Environment Operations (Clean Air) Regulation 2022* requires testing for certain purposes to be conducted in accordance with test methods contained in the publication "Approved Methods for the Sampling and Analysis of Air Pollutants in NSW".

- M3.2 Subject to any express provision to the contrary in this licence, monitoring for the concentration of a pollutant discharged to waters or applied to a utilisation area must be done in accordance with the Approved Methods Publication unless another method has been approved by the EPA in writing before any tests are conducted.

M4 Environmental monitoring

Environment Protection Licence

Licence - 767

- M4.1 The licensee must maintain and implement an Ongoing Waterway Monitoring and Coal Removal Program. The program must:
- include prompt inspections and coal removal as necessary, every 4 months and following 75 mm (or more) of rainfall at the premises in any 24 hour period; and
 - use approved monitoring locations and coal removal methodologies as listed in the Camp Gully Creek and Hacking River Ongoing Monitoring Plan and Clean Up Program, 9 June 2023 (DOC23/528729).
 - submit a report after 1 year (mid February 2026) listing activities, observations, any removal undertake, and recommendations for the continuation of the program.

M5 Weather monitoring

- M5.1 At the point(s) identified below, the licensee must monitor (by sampling and obtaining results by analysis) the parameters specified in Column 1 of the table below, using the corresponding sampling method, units of measure, averaging period and sampling frequency, specified opposite in the Columns 2, 3, 4 and 5 respectively.

POINT 17

Parameter	Sampling method	Units of measure	Averaging period	Frequency
Rainfall	Continuously	millimetres	24 hours	Continuous

M6 Recording of pollution complaints

- M6.1 The licensee must keep a legible record of all complaints made to the licensee or any employee or agent of the licensee in relation to pollution arising from any activity to which this licence applies.
- M6.2 The record must include details of the following:
- the date and time of the complaint;
 - the method by which the complaint was made;
 - any personal details of the complainant which were provided by the complainant or, if no such details were provided, a note to that effect;
 - the nature of the complaint;
 - the action taken by the licensee in relation to the complaint, including any follow-up contact with the complainant; and
 - if no action was taken by the licensee, the reasons why no action was taken.
- M6.3 The record of a complaint must be kept for at least 4 years after the complaint was made.
- M6.4 The record must be produced to any authorised officer of the EPA who asks to see them.

Environment Protection Licence

Licence - 767

M7 Telephone complaints line

- M7.1 The licensee must operate during its operating hours a telephone complaints line for the purpose of receiving any complaints from members of the public in relation to activities conducted at the premises or by the vehicle or mobile plant, unless otherwise specified in the licence.
- M7.2 The licensee must notify the public of the complaints line telephone number and the fact that it is a complaints line so that the impacted community knows how to make a complaint.
- M7.3 The preceding two conditions do not apply until 3 months after: the date of the issue of this licence.

M8 Requirement to monitor volume or mass

- M8.1 For each discharge point or utilisation area specified below, the licensee must monitor:
- the volume of liquids discharged to water or applied to the area;
 - the mass of solids applied to the area;
 - the mass of pollutants emitted to the air;
- at the frequency and using the method and units of measure, specified below.

POINT 8

Frequency	Unit of Measure	Sampling Method
Continuous	kilolitres per day	Electronic level sensor and continuous logger

POINT 10

Frequency	Unit of Measure	Sampling Method
Continuous	kilolitres per day	Flow meter and continuous logger

M9 Other monitoring and recording conditions

- M9.1 The licensee must monitor and record the following information in relation to discharges that occur through point 8:
- the time, date and length of time that a discharge occurs;
 - the daily volume of discharge;
 - the cumulative rainfall total for the preceding 5 days up to the time of discharge; and
 - the quantity of sediment and water stored in both dams prior to, during, and following the rainfall and discharge events.

The information above must be reported to the EPA within 2 business days of the cessation of the discharge.

- M9.2 The licensee must continuously monitor and record the following information in relation to the Settling Pond and the Turkey's Nest dam:
- the volume of sediment as a percentage of total dam capacity;

Environment Protection Licence

Licence - 767

- b) the volume of water as a percentage of total dam capacity; and
- c) the volume of water in litres.

The information above must be provided to EPA upon request.

- M9.3 All continuous monitoring equipment must be operated and maintained to achieve an availability of 90% of the time during the reporting period.

6 Reporting Conditions

R1 Annual return documents

- R1.1 The licensee must complete and supply to the EPA an Annual Return in the approved form comprising:

1. a Statement of Compliance,
2. a Monitoring and Complaints Summary,
3. a Statement of Compliance - Licence Conditions,
4. a Statement of Compliance - Load based Fee,
5. a Statement of Compliance - Requirement to Prepare Pollution Incident Response Management Plan,
6. a Statement of Compliance - Requirement to Publish Pollution Monitoring Data; and
7. a Statement of Compliance - Environmental Management Systems and Practices.

At the end of each reporting period, the EPA will provide to the licensee notification that the Annual Return is due.

- R1.2 An Annual Return must be prepared in respect of each reporting period, except as provided below.

Note: The term "reporting period" is defined in the dictionary at the end of this licence. Do not complete the Annual Return until after the end of the reporting period.

- R1.3 Where this licence is transferred from the licensee to a new licensee:

- a) the transferring licensee must prepare an Annual Return for the period commencing on the first day of the reporting period and ending on the date the application for the transfer of the licence to the new licensee is granted; and
- b) the new licensee must prepare an Annual Return for the period commencing on the date the application for the transfer of the licence is granted and ending on the last day of the reporting period.

Note: An application to transfer a licence must be made in the approved form for this purpose.

- R1.4 Where this licence is surrendered by the licensee or revoked by the EPA or Minister, the licensee must prepare an Annual Return in respect of the period commencing on the first day of the reporting period and ending on:

- a) in relation to the surrender of a licence - the date when notice in writing of approval of the surrender is given; or
- b) in relation to the revocation of the licence - the date from which notice revoking the licence operates.

Environment Protection Licence

Licence - 767

- R1.5 The Annual Return for the reporting period must be supplied to the EPA via eConnect *EPA* or by registered post not later than 60 days after the end of each reporting period or in the case of a transferring licence not later than 60 days after the date the transfer was granted (the 'due date').
- R1.6 The licensee must retain a copy of the Annual Return supplied to the EPA for a period of at least 4 years after the Annual Return was due to be supplied to the EPA.
- R1.7 Within the Annual Return, the Statements of Compliance must be certified and the Monitoring and Complaints Summary must be signed by:
- the licence holder; or
 - by a person approved in writing by the EPA to sign on behalf of the licence holder.
- R1.8 Annual Return Supplement
The licensee must submit an Annual Return Supplement to the EPA for each reporting period with the Annual Return.
- The Supplement must include the following information:
- All monitoring data collected for Point 9 excluding data collected by continuous monitoring.
 - Any monitoring data or information required under condition O4.1 and M8.1 in this licence.

R2 Notification of environmental harm

Note: The licensee or its employees must notify all relevant authorities of incidents causing or threatening material harm to the environment immediately after the person becomes aware of the incident in accordance with the requirements of Part 5.7 of the Act.

- R2.1 Notifications must be made by telephoning the Environment Line service on 131 555.
- R2.2 The licensee must provide written details of the notification to the EPA within 7 days of the date on which they became aware of the incident.

R3 Written report

- R3.1 Where an authorised officer of the EPA suspects on reasonable grounds that:
- where this licence applies to premises, an event has occurred at the premises; or
 - where this licence applies to vehicles or mobile plant, an event has occurred in connection with the carrying out of the activities authorised by this licence, and the event has caused, is causing or is likely to cause material harm to the environment (whether the harm occurs on or off premises to which the licence applies), the authorised officer may request a written report of the event.
- R3.2 The licensee must make all reasonable inquiries in relation to the event and supply the report to the EPA within such time as may be specified in the request.
- R3.3 The request may require a report which includes any or all of the following information:
- the cause, time and duration of the event;
 - the type, volume and concentration of every pollutant discharged as a result of the event;
 - the name, address and business hours telephone number of employees or agents of the licensee, or a

Environment Protection Licence

Licence - 767

specified class of them, who witnessed the event;

d) the name, address and business hours telephone number of every other person (of whom the licensee is aware) who witnessed the event, unless the licensee has been unable to obtain that information after making reasonable effort;

e) action taken by the licensee in relation to the event, including any follow-up contact with any complainants;

f) details of any measure taken or proposed to be taken to prevent or mitigate against a recurrence of such an event; and

g) any other relevant matters.

R3.4 The EPA may make a written request for further details in relation to any of the above matters if it is not satisfied with the report provided by the licensee. The licensee must provide such further details to the EPA within the time specified in the request.

7 General Conditions

G1 Copy of licence kept at the premises or plant

G1.1 A copy of this licence must be kept at the premises to which the licence applies.

G1.2 The licence must be produced to any authorised officer of the EPA who asks to see it.

G1.3 The licence must be available for inspection by any employee or agent of the licensee working at the premises.

G2 Other general conditions

G2.1 Completed Programs

Program	Description	Completed Date
PRP1: Wastewater Collection and Treatment System	Wastewater collection and treatment system installed to collect and treat contaminated surface stormwater runoff from the coal and coal waste stockpile area catchments.	30-June-1997
PRP2: Turkeys Nest Pond and Pumping System Upgrade	Turkeys Nest Pond and Pumping System upgrade.	31-October-2000
PRP3: Settlement Pond Upgrade	Settlement Pond upgrade to enhance the collection and treatment of contaminated stormwater from the upper catchment of the premises	31-December-2000
PRP4: Taj Mahal Upgrade	Taj Mahal upgrade to facilitate the use of stormwater for operational purposes and to provide a means of underground disposal of excess contaminated stormwater from significant rainfall events.	31-January-2001

Environment Protection Licence

Licence - 767

PRP5: Dust Monitoring Program	Install dust deposition monitoring network. Assess the impact of dust from coal mine on local community	31-March-2003
PRP6: Surface Dust Action Plan	Complete a surface dust action plan. Minimise the impact of dust from coal mine	30-June-2003
PRP7: Surface Water Assessment	Prepare a surface water management plan including surveys of all water containment structures and determine storm event (24hr) that site can capture and treat. Protect Hacking River Catchment and make licence more enforceable by determining capacity of site to capture and treat stormwater run off.	31-August-2004
PRP8: Improvement to Dust Suppression Systems	Prepare and submit a report investigating installation of additional stockpile sprays. Installation of sprays to reduce impact of dust on community	31-August-2004
PRP9: Noise Assessment Report	Assess noise from the premises in accordance with INP and determine if they meet requirements of the policy. Eliminate public concern caused by machinery operations at night and prepare noise limits for licence	31-October-2004
PRP10: Improvements to Rail Line Dust Suppression	Install six additional dust suppression sprays along the rail line near the stockpile. Reduce dust emissions from the stockpile and during rail loading operations	31-December-2005
PRP11: Noise Emission Reduction Program	Noise Emission Reduction Program Report. Investigate measures to reduce noise emissions from the premises with the aim of meeting the noise criteria outlined.(+)	30-April-2006
PRP12: Stage 2 Noise Investigation and Mitigation	Stage 2 Noise Investigation and Mitigation Program. Identify reasonable and feasible noise controls and management measures for the premises.(+)	31-March-2008
PRP13: Coal Mine Particulate Matter Control Best Practice	Requires licensee to conduct a site specific Best Management Practice (BMP) determination to identify ways to reduce particle emissions	21-September-2012
EIP 1: Rail Wagon Profiler	Installation of a rail noise profiler to reduce noise and dust emissions	30-June-2018
PRP14: Water Discharge Impact Assessment	Undertake an assessment of the environmental impact of discharges from the premises on Camp Gully Creek (Camp Creek) and the Hacking River.	30-September-2023
PRP15: Real Time Water Quality & Flow Monitoring	Implement new water quality and flow monitoring systems, publish the real time water monitoring results on the licensee's website. Develop a Trigger Action Response Plan (TARP) that includes water quality and water flow trigger levels at which actions and responses will be implemented.	30-June-2024
PRP16: Storage Dam Capacity Monitoring System	Licensee to implement a sediment and water monitoring system to inform and help facilitate improved dam management practices.	30-September-2023
PRP19: Ongoing Waterway Monitoring and Coal Removal Program	Coal clean up program	30-November-2024

Environment Protection Licence

Licence - 767

PRP20: Coal Discharge
Monitoring and Response
Plan

Monitoring and response program

30-November-2024

8 Pollution Studies and Reduction Programs

U1 PRP17: Options Assessment - Prevent or Minimise Turkey's Nest Dam Discharges

U1.1 Background

The water management system at the premises captures contaminated stormwater that runs off coal stockpiles and coal handling areas. The stormwater collection system includes two main catchment areas with 6 stockpiles and 2 sediment retention basins: the "Settling Pond" and the "Turkey's Nest Dam" (the Dams). Contaminated water from coal processing areas, stockpiles, and stockpiling areas reports to the dams. Contaminated water from the mine's underground workings is also pumped to the dams.

Stormwater runoff water and underground water contain suspended solids (herein called coal fines) and dissolved salts including dissolved metals and bicarbonate. Contaminated water in the dams is treated by filtration to remove suspended solids before discharge from LDP 7. During wet weather, untreated water may overflow from the Turkey's Nest Dam spillway (LDP 8) to Camp Gully Creek.

The Turkey's Nest Dam discharged during wet weather periods in 2021 and 2022. Coal fines that had deposited in the dams reduced the volume of stormwater runoff that was able to be captured and treated prior to discharge. The removal of coal fines from the dams was limited by the ability of the washery plant to accept and process the fines. The result was a series of discharges where quantities of coal material entered Camp Gully Creek and the Hacking River. The EPA contends that actions could have been taken to reduce the level of coal fines in the dams and prevent or minimise the incidents.

The aim of this PRP is to engage a suitably qualified and experienced professional or company to investigate all reasonable and feasible options to avoid discharges occurring through point 8 in the first instance and then if discharges are unavoidable, to reduce the frequency of any discharges.

Requirements

Unless otherwise agreed in writing by the EPA:

1. By the 23 June 2023 the licensee must propose a suitably qualified professional/s or company/ies (expert/s) to the EPA with experience in mine stockpile and stormwater management to undertake the required investigations. (DOC23/529876)
2. The approved expert/s must investigate all reasonable and feasible options to avoid discharges and if discharges are unavoidable, reduce the frequency of discharges that occur from the Turkey's Nest Dam (point 8) during wet weather events.

The options examined must include but not be limited to the following:

a) Increased capacity to capture and store rainfall runoff.

The expert/s must assess options to increase the water storage capacity to capture a greater volume of run-off. This must include, but may not be limited to, expanding or deepening the existing storage basins,

Environment Protection Licence

Licence - 767

finding new areas for water storage, and maintaining contingency storage in the old mine workings.

b) Reduction in coal fines runoff and contaminated stormwater generated.

The expert/s must assess options for each stockpile to minimise the generation of water contaminated with coal fines when exposed to rainfall or stormwater runoff.

The options must include, but are not limited to, diverting or piping stormwater flows around stockpiles, covering or installing roofs over stockpiles (particularly highly ranked stockpiles), constructing enclosures or sheds, applying binders to any longer term or less active stockpiles, and installing stormwater diversions around stockpiles.

The licensee must also assess options to minimise the volume of contaminated water that reports to the dams. The options must include but may not be limited to direct reuse in surface equipment, retention underground, diversion back to mine workings, or treatment prior to storage in the dams.

The licensee must assess the feasibility of each option with consideration of factors including reduced sediment load, cost, and impediment to site operations.

c) Increased rate of removal of water and coal fines from the dams.

The expert/s must assess options to increase the rate of removal and processing of coal fines and water from the dams. The options must include but are not limited to: coal handling plant upgrade(s) to increase the maximum slurry transfer rate; examination of the increased rate of transfer of contaminated water from the dams for treatment in the water treatment plant; processing systems that are separate to the coal handling plant to remove and dewater coal fines and combine them with exported product coal. These should include, for example, belt presses and drying beds used in combination with mixing mill(s).

3. Water Balance Model

A water balance model using a daily timestep analysis must be prepared to compare the effectiveness of the options identified (above 2a – 2c) with:

- The baseline water management system that was in place on 31 December 2022
- A type D sediment basin in a sensitive receiving catchment following 'Managing Urban Stormwater: Soils and Construction (vol 1)' and 'Mines and Quarries (vol 2E)'.

A report which details the above works and assesses the feasibility of implementing the identified options must be submitted to the EPA by the due date.

Due Date: To be determined with consideration of Expert advice.

U2 PRP18: Options Assessment - Storm water Treatment to Remove Coal Fines

U2.1 Background

Stormwater from the pit top area and some groundwater from mining activities are stored in the 2 retention basins at the premises: the Settling Pond and the Turkey's Nest Dam (the dams). The dams rely on settling to remove coal particles and suspended material (coal fines) prior to reuse on site or discharge.

Environment Protection Licence

Licence - 767

Discharges can contain elevated levels of coal fines.

The aim of this PRP is to assess options to upgrade dam infrastructure and stored water treatment to improve the quality of any discharges.

Note: The requirements of this PRP may be varied with consideration of the outcomes of the *Options Assessment – Prevent of Minimise Turkey’s Nest Dam Discharges* condition.

Requirements

Unless otherwise agreed in writing by the EPA:

1. By the due date the licensee must propose a suitably qualified and experienced professional (expert) to the EPA with experience in designing and implementing treatment systems which remove coal fines from stormwater.

The approved expert must undertake an options assessment of upgraded dam infrastructure and retained water treatment and propose some conceptual designs for systems which could be implemented at the premises. The system should be designed to maximise the removal of coal fines of any discharge.

2. By the due date the EPA approved professional must undertake an options assessment and submit a report to the EPA for treatment system/s options.

3. The system assessment report must include, but may not be limited to,

- chemical flocculation and / or coagulation at one or both of the 2 dams. This must include High Efficiency Sediment (HES) Basins and associated infrastructure (forebay, dosing system, level spreader, decanting system, and spillway discharge) the premises, and physical treatment.

- physical treatment systems such as filtration and gravity separation

The options report must assess, but may not be limited to the following the following considerations: available space, design options and configurations for both dams; infrastructure locations, costs, appropriate dosing systems, suitable chemicals and potential toxicity, expected improvements to discharge water quality, the frequency of discharges, and operation with current management systems e.g. offtake to the washery

4. The report must include potential conceptual design configurations on site.

Due Date: To be determined with consideration of Condition U4 outcomes and Expert advice.

U3 PRP21: Discharges from LDP7 - Improved Water Management System Report

U3.1 Discharges from LDP7 - Improved Water Management System Report

Aim

The aim of this condition is to identify improvements to the premises water management systems to

Environment Protection Licence

Licence - 767

contribute to achieving the following water quality targets in Camp Gully Creek.

Toxicants

- ANZG default guideline values for water quality that meet 99 percentile species level protection.

Physical and Chemical Stressors

- pH 7.3 – 7.7
- Electrical conductivity (specific conductance) 270 $\mu\text{s}/\text{cm}$.
- Turbidity 3 NTU
- Total alkalinity 50 mg/L
- Total nitrogen 450 $\mu\text{g}/\text{L}$
- Total phosphorus 30 $\mu\text{g}/\text{L}$

Note:

The ANZG “high conservation value” level of protection applies to Camp Gully Creek because it flows into Garrawarra State Conservation Area and Royal National Park immediately downstream of the premises. This is consistent with the Australian and New Zealand Guidelines for Fresh and Marine Water Quality (ANZG, 2018) and the approach adopted by the licensee's Discharge Impact Assessment report.

The criteria for Physical and Chemical Stressors are the estimated 80th percentile values measured at a site in Camp Gully Creek upstream of the premises (for pH, 20% and 80% values are given). This method for determining guideline values for stressors is recommended in the Australian and New Zealand Guidelines for Fresh and Marine Water Quality 2018 (ANZG). The Licensee may continue to monitor the upstream reference site to refine these site-specific guideline values. However approval must be sought from the EPA to modify the values for use in the condition below.

Requirements

1. By 5pm, 1 July 2024, the Licensee must propose a suitably qualified consultant or company, with experience in coal mine water management and treatment to the EPA for approval to engage the proposed consultant or company to complete the report listed below.

Note: The EPA will take consideration of any recommendations made by the expert consultant on the scope of requirements and timing for delivery of reports under this condition.

Complete (DOC24/542126-2).

2. By 5pm, 30 September 2024, the Licensee must install additional continuous monitor/s to record:

- a. water quality and discharges from LDP 7 along Camp Gully Creek in respect of physical and chemical stressors (immediately downstream of LDP 7); and

Environment Protection Licence

Licence - 767

b. the flow in Camp Gully Creek downstream of LDP 7:

The objective of this requirement is to account for the LDP 7 discharges, and upstream and downstream locations, to the extent reasonably possible.

3. By 5pm, 30 September 2024, the Licensee must make the results of the additional continuous monitoring available and accessible to the EPA.

Note: These results should be used by the licensee, and will be used by the EPA, to monitor discharges from LDP 7 to Camp Gully creek as well as assess the effectiveness of water management improvements. Monitoring requirements may be varied if considered appropriate by the EPA.

4. By 5pm, 28 February 2025, the approved consultant or company must submit an Improved Water Management System Report (Report 1) to the EPA which contains a Water Management and Treatment Options Assessment and a Potential Water Management System to achieve the above aim.

5. The Water Management and Treatment Options Assessment section of Report 1 must include, at minimum:

a. An assessment of reasonable and feasible options available to:

- i. Increase water storage capacity and retain water on the premises to avoid or minimise LDP 7 discharges;
- ii. Improve water management to prevent discharges during periods of low flow in Camp Gully Creek;
- iii. Install water treatment system/s or other practical measures to improve the quality of discharges;

b. The assessment of each option must contain the following information. The level of detail to be provided must be sufficient to allow comparison of options at a strategic level.

- i. A description of the option.
- ii. For options to avoid and minimise discharges, sub-daily time step water balance model to assess effectiveness.
- iii. An assessment of the water quality outcomes for Camp Gully Creek and the Hacking River. This assessment should predict the concentrations of key pollutants of concern at sites in Camp Gully Creek and the Hacking River under a range of operational and creek flow conditions from typical through to worst case. This should include sites in Camp Gully Creek immediately upstream and downstream of LDP7, sites at the current continuous monitoring sites, and sites in the Hacking River immediately upstream and downstream of the confluence with Camp Gully Creek.
- iv. Indicative and relative costs, and indicative timeframes.
- v. The level of technical expertise needed for operation and maintenance.
- vi. The ease of adaptation into existing processes.
- vii. Other environmental considerations, including noise impacts, air emissions, electricity use, and waste generation and disposal.
- viii. Examples of application in relevant industrial settings.

c. The overall effectiveness of the options set out in a. when implemented together as a combined system.

Environment Protection Licence

Licence - 767

6. The Potential Water Management System section of Report 1 must detail possible improvements to the Water Management System that could be implemented identifying (and justifying) the most suitable option or suite of preferred options.

Note: The EPA proposes to consider issuing further requirements to implement improvements to the water management system with consideration of Report 1 and any other relevant information.

U4 PRP22: Water Seepage/Groundwater Options Assessment

U4.1 Water Seepage/Groundwater Options Assessment

Aim

The aims of this investigation and report are to:

- a. Identify the points from which groundwater seepage from the premises enters Camp Gully Creek.
- b. Identify options to minimise seepage of polluted groundwater from the premises to Camp Gully Creek where the source of the pollution is determined to be from the premises.
- c. Contribute to achieving the electrical conductivity (specific conductance) target in Camp Gully Creek of 270 $\mu\text{s}/\text{cm}$.

Requirements

1. By 5pm, 1 July 2024, the Licensee must propose a suitably qualified professional or company with experience in shallow groundwater investigation and management at mine sites to the EPA for approval to engage the proposed consultant or company to carry out the requirements below.
Complete (DOC24/542121).

2. By 5pm, 2 December 2024, undertake an investigation and submit a Shallow Groundwater Seepage Investigation & Mitigation Report (Report 2).

3. Report 2 must include at minimum, the following information:

- a. A detailed seepage assessment and monitoring survey to identify area of seepage along sections of the pit top adjacent to Camp Gully Creek.
- b. A conceptual model, or mapped inventory of sources of shallow groundwater inputs and outputs which could contribute to shallow groundwater flows to Camp Gully Creek. This must take account of the monitoring undertaken above.
- c. A list of shallow groundwater inputs and outputs ranked by flow rate and electrical conductivity.
- d. Where the source is determined to be, or is likely to be from the premises, an impact mitigation options study to identify reasonable and feasible options to prevent, reduce, intercept, recover, return, and treat polluted groundwater seepage to Camp Gully Creek in order to reduce the level of pH and electrical conductivity discharged from the premises. Options must include, but not be limited to:
 - i. diverting upstream drainage courses around the premises,

Environment Protection Licence

Licence - 767

- ii. piping or lining drainage courses to prevent sub-surface water flows coming into contact with materials with potential to increase electrical conductivity,
- iii. lining the Sediment Pond to prevent potential leakage,
- iv. interception & return of seepage to the premises water management system.
- e. The available option or suite of options including estimated environmental benefit and draft timeframe for implementation.

Complete (DOC24/989163).

Note: The EPA proposes to consider issuing further requirements to implement improvements to the water management system, having regard to the findings of Report 2.

9 Special Conditions

E1 Update Surface Water Management Plan

E1.1 Background

The licensee submitted a review of this Plan in late 2023. The EPA provided feedback on this Plan. The licensee has made and continues to make changes to surface water management and infrastructure. This Plan should be kept updated to incorporate these changes.

Requirements

Unless otherwise agreed in writing by the EPA, by 30 June 2025 the licensee must update the Surface Facilities Water Management Plan (dated November 2023) by the due date below. The updated plan must reflect the current operation and include revised maps and/or photographs, facility description, storage capacity, monitoring program, management measures, and licence monitoring and discharge points.

Due Date: 30 June 2025

E2 Completed Special Conditions

Special Condition	Description	Completed Date
SC 1 - Air Monitoring Network Review	To review the current Air Quality Management Plan (AQMP) and the associated air quality monitoring network to ensure the monitoring equipment, locations, and the data collected is accurate, representative, and suitable for the intended use.	15-December-2023
SC 2 - Update Surface Water Management Plan 2023	To review & update the current Plan with consideration of recent site changes.	30-December-2023
SC 3 - Water Treatment Plant Performance Monitoring	To undertake monitoring of the Water Treatment Plant to assess performance following upgrades at part of the plant.	30-January-2025

Environment Protection Licence

Licence - 767

Dictionary

General Dictionary

3DGM [in relation to a concentration limit]	Means the three day geometric mean, which is calculated by multiplying the results of the analysis of three samples collected on consecutive days and then taking the cubed root of that amount. Where one or more of the samples is zero or below the detection limit for the analysis, then 1 or the detection limit respectively should be used in place of those samples
Act	Means the Protection of the Environment Operations Act 1997
activity	Means a scheduled or non-scheduled activity within the meaning of the Protection of the Environment Operations Act 1997
actual load	Has the same meaning as in the Protection of the Environment Operations (General) Regulation 2009
AM	Together with a number, means an ambient air monitoring method of that number prescribed by the <i>Approved Methods for the Sampling and Analysis of Air Pollutants in New South Wales</i> .
AMG	Australian Map Grid
anniversary date	The anniversary date is the anniversary each year of the date of issue of the licence. In the case of a licence continued in force by the Protection of the Environment Operations Act 1997, the date of issue of the licence is the first anniversary of the date of issue or last renewal of the licence following the commencement of the Act.
annual return	Is defined in R1.1
Approved Methods Publication	Has the same meaning as in the Protection of the Environment Operations (General) Regulation 2009
assessable pollutants	Has the same meaning as in the Protection of the Environment Operations (General) Regulation 2009
BOD	Means biochemical oxygen demand
CEM	Together with a number, means a continuous emission monitoring method of that number prescribed by the <i>Approved Methods for the Sampling and Analysis of Air Pollutants in New South Wales</i> .
COD	Means chemical oxygen demand
composite sample	Unless otherwise specifically approved in writing by the EPA, a sample consisting of 24 individual samples collected at hourly intervals and each having an equivalent volume.
cond.	Means conductivity
environment	Has the same meaning as in the Protection of the Environment Operations Act 1997
environment protection legislation	Has the same meaning as in the Protection of the Environment Administration Act 1991
EPA	Means Environment Protection Authority of New South Wales.
fee-based activity classification	Means the numbered short descriptions in Schedule 1 of the Protection of the Environment Operations (General) Regulation 2009.
general solid waste (non-putrescible)	Has the same meaning as in Part 3 of Schedule 1 of the Protection of the Environment Operations Act 1997

Environment Protection Licence

Licence - 767

flow weighted composite sample	Means a sample whose composites are sized in proportion to the flow at each composites time of collection.
general solid waste (putrescible)	Has the same meaning as in Part 3 of Schedule 1 of the Protection of the Environment Operations Act 1997
grab sample	Means a single sample taken at a point at a single time
hazardous waste	Has the same meaning as in Part 3 of Schedule 1 of the Protection of the Environment Operations Act 1997
licensee	Means the licence holder described at the front of this licence
load calculation protocol	Has the same meaning as in the Protection of the Environment Operations (General) Regulation 2009
local authority	Has the same meaning as in the Protection of the Environment Operations Act 1997
material harm	Has the same meaning as in section 147 Protection of the Environment Operations Act 1997
MBAS	Means methylene blue active substances
Minister	Means the Minister administering the Protection of the Environment Operations Act 1997
mobile plant	Has the same meaning as in Part 3 of Schedule 1 of the Protection of the Environment Operations Act 1997
motor vehicle	Has the same meaning as in the Protection of the Environment Operations Act 1997
O&G	Means oil and grease
percentile [in relation to a concentration limit of a sample]	Means that percentage [eg.50%] of the number of samples taken that must meet the concentration limit specified in the licence for that pollutant over a specified period of time. In this licence, the specified period of time is the Reporting Period unless otherwise stated in this licence.
plant	Includes all plant within the meaning of the Protection of the Environment Operations Act 1997 as well as motor vehicles.
pollution of waters [or water pollution]	Has the same meaning as in the Protection of the Environment Operations Act 1997
premises	Means the premises described in condition A2.1
public authority	Has the same meaning as in the Protection of the Environment Operations Act 1997
regional office	Means the relevant EPA office referred to in the Contacting the EPA document accompanying this licence
reporting period	For the purposes of this licence, the reporting period means the period of 12 months after the issue of the licence, and each subsequent period of 12 months. In the case of a licence continued in force by the Protection of the Environment Operations Act 1997, the date of issue of the licence is the first anniversary of the date of issue or last renewal of the licence following the commencement of the Act.
restricted solid waste	Has the same meaning as in Part 3 of Schedule 1 of the Protection of the Environment Operations Act 1997
scheduled activity	Means an activity listed in Schedule 1 of the Protection of the Environment Operations Act 1997
special waste	Has the same meaning as in Part 3 of Schedule 1 of the Protection of the Environment Operations Act 1997
TM	Together with a number, means a test method of that number prescribed by the <i>Approved Methods for the Sampling and Analysis of Air Pollutants in New South Wales</i> .

Environment Protection Licence

Licence - 767

TSP	Means total suspended particles
TSS	Means total suspended solids
Type 1 substance	Means the elements antimony, arsenic, cadmium, lead or mercury or any compound containing one or more of those elements
Type 2 substance	Means the elements beryllium, chromium, cobalt, manganese, nickel, selenium, tin or vanadium or any compound containing one or more of those elements
utilisation area	Means any area shown as a utilisation area on a map submitted with the application for this licence
waste	Has the same meaning as in the Protection of the Environment Operations Act 1997
waste type	Means liquid, restricted solid waste, general solid waste (putrescible), general solid waste (non-putrescible), special waste or hazardous waste
Wellhead	Has the same meaning as in Schedule 1 to the Protection of the Environment Operations (General) Regulation 2021.

Ms Debbie Maddison

Environment Protection Authority

(By Delegation)

Date of this edition: 06-April-2000

Environment Protection Licence

Licence - 767

End Notes

- 1 Licence varied by notice V/M upgrade, issued on 07-Aug-2000, which came into effect on 07-Aug-2000.
- 2 Licence varied by notice 1002149, issued on 18-Oct-2000, which came into effect on 12-Nov-2000.
- 3 Licence varied by notice 1009721, issued on 18-Jul-2001, which came into effect on 07-Aug-2001.
- 4 Licence varied by notice 1012601, issued on 19-Nov-2001, which came into effect on 14-Dec-2001.
- 5 Licence varied by notice 1018036, issued on 21-Jun-2002, which came into effect on 27-Jun-2002.
- 6 Licence varied by notice 1025170, issued on 28-Feb-2003, which came into effect on 25-Mar-2003.
- 7 Licence varied by notice 1027944, issued on 21-Aug-2003, which came into effect on 15-Sep-2003.
- 8 Licence varied by notice 1036485, issued on 11-May-2004, which came into effect on 05-Jun-2004.
- 9 Licence varied by notice 1039412, issued on 09-Sep-2004, which came into effect on 04-Oct-2004.
- 10 Licence varied by notice 1042725, issued on 07-Jan-2005, which came into effect on 01-Feb-2005.
- 11 Licence varied by notice 1048913, issued on 28-Jun-2005, which came into effect on 23-Jul-2005.
- 12 Licence varied by notice 1052262, issued on 02-Dec-2005, which came into effect on 27-Dec-2005.
- 13 Licence varied by change to DEC Region allocation, issued on 16-Mar-2006, which came into effect on 16-Mar-2006.
- 14 Licence varied by notice 1060175, issued on 12-Dec-2006, which came into effect on 12-Dec-2006.
- 15 Licence varied by notice 1079812, issued on 05-Dec-2007, which came into effect on 05-Dec-2007.
- 16 Condition A1.3 Not applicable varied by notice issued on <issue date> which came into effect on <effective date>
- 17 Licence varied by notice 1104121, issued on 02-Oct-2009, which came into effect on 02-Oct-2009.
- 18 Licence varied by notice 1501798 issued on 01-Nov-2011
- 19 Licence varied by notice 1502957 issued on 19-Dec-2011

Environment Protection Licence

Licence - 767

20	Licence varied by notice	1508753 issued on 11-Sep-2012
21	Licence varied by notice	1515088 issued on 11-Dec-2013
22	Licence varied by notice	1526235 issued on 21-Nov-2014
23	Licence varied by notice	1532622 issued on 04-Aug-2015
24	Licence varied by notice	1561733 issued on 12-Mar-2018
25	Licence varied by notice	1574620 issued on 11-Jan-2019
26	Licence varied by notice	1621831 issued on 19-Aug-2022
27	Licence varied by notice	1624411 issued on 08-Feb-2023
28	Licence varied by notice	1627339 issued on 09-May-2023
29	Licence varied by notice	1629027 issued on 16-May-2023
30	Licence varied by notice	1630682 issued on 06-Jul-2023
31	Licence varied by notice	1634054 issued on 25-Jan-2024
32	Licence varied by notice	1639202 issued on 31-May-2024
33	Licence varied by notice	1641176 issued on 10-Feb-2025